

Frame scaffold FIX 70



Many users learned the system advantages to estimate in practice. Whether as painters-, fitters-, protection-, catch or mobile stage, with the müba scaffold frame FIX 70 always the right scaffold system is ready to hand.

...IS OPTIMALLY ADAPTED TO YOUR BUILDING SITE REQUIREMENTS!



70 cm system width
Load class/ scaffold class 3
Approval no. Z-8.1-182



Frame scaffold FIX 70

ONE NAME - ONE PROGRAM

Flexible employment of your scaffolds is not only possible, but construction site-fairly necessary!

Individual planning is desired!

Flexible, **I**ndividual, **eX**act

eXact calculation of the scaffolds, not only concerning the price, but also safety-relevant on best level!



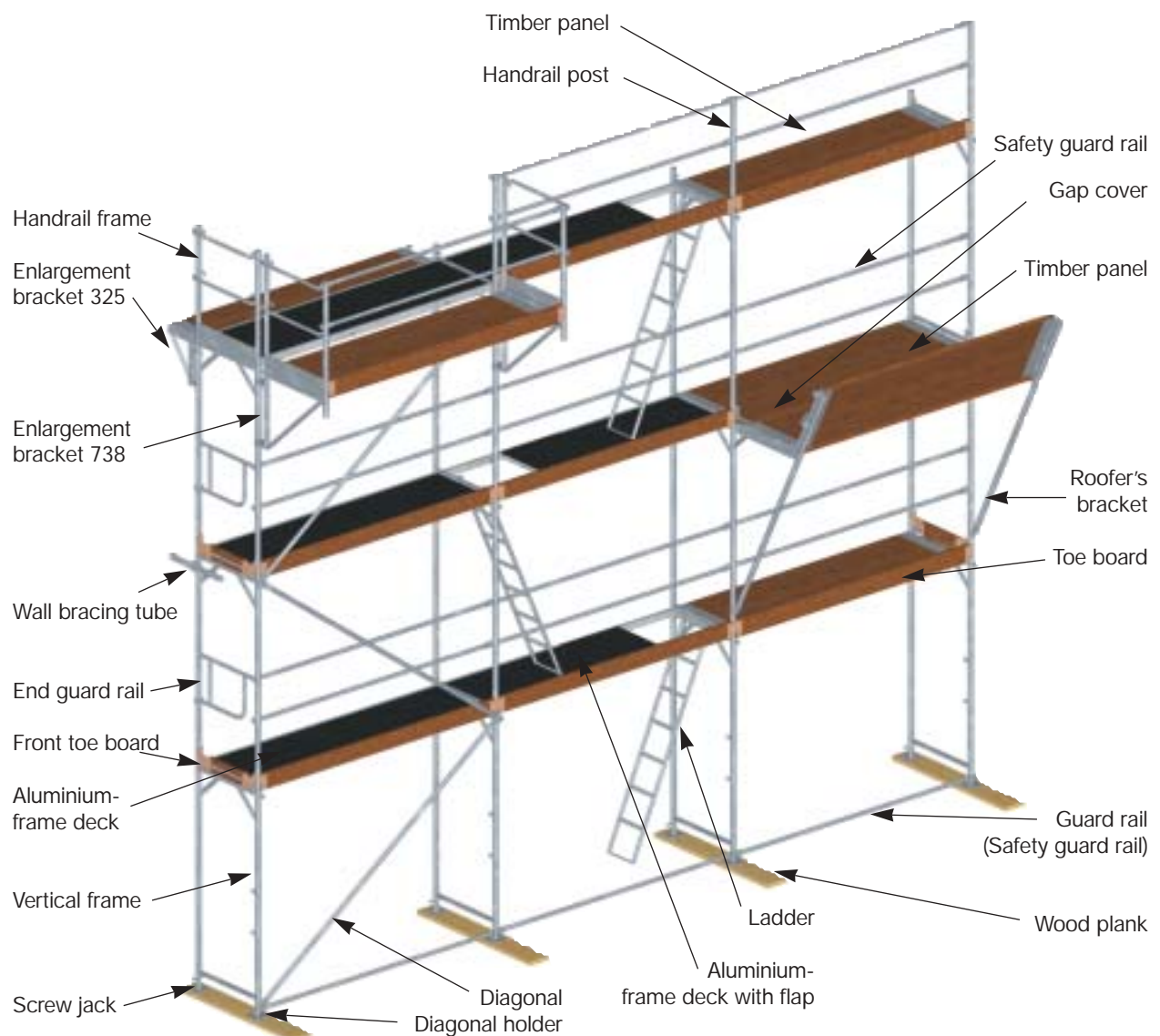
The müba FIX 70 scaffold frame is a scaffold, which is to your building site requirements optimal and economically adapted.

The müba scaffold frame FIX 70 is assigned to load class 3 according to DIN EN 12811-1 4420 and is certified with a platform load of 200 kg/m².

Safe and technically relevant thought-out construction, light individual parts and high volume production ensure you a safe, economical investment into your company's future.

Here now some points, which you should consider during your purchase decision.

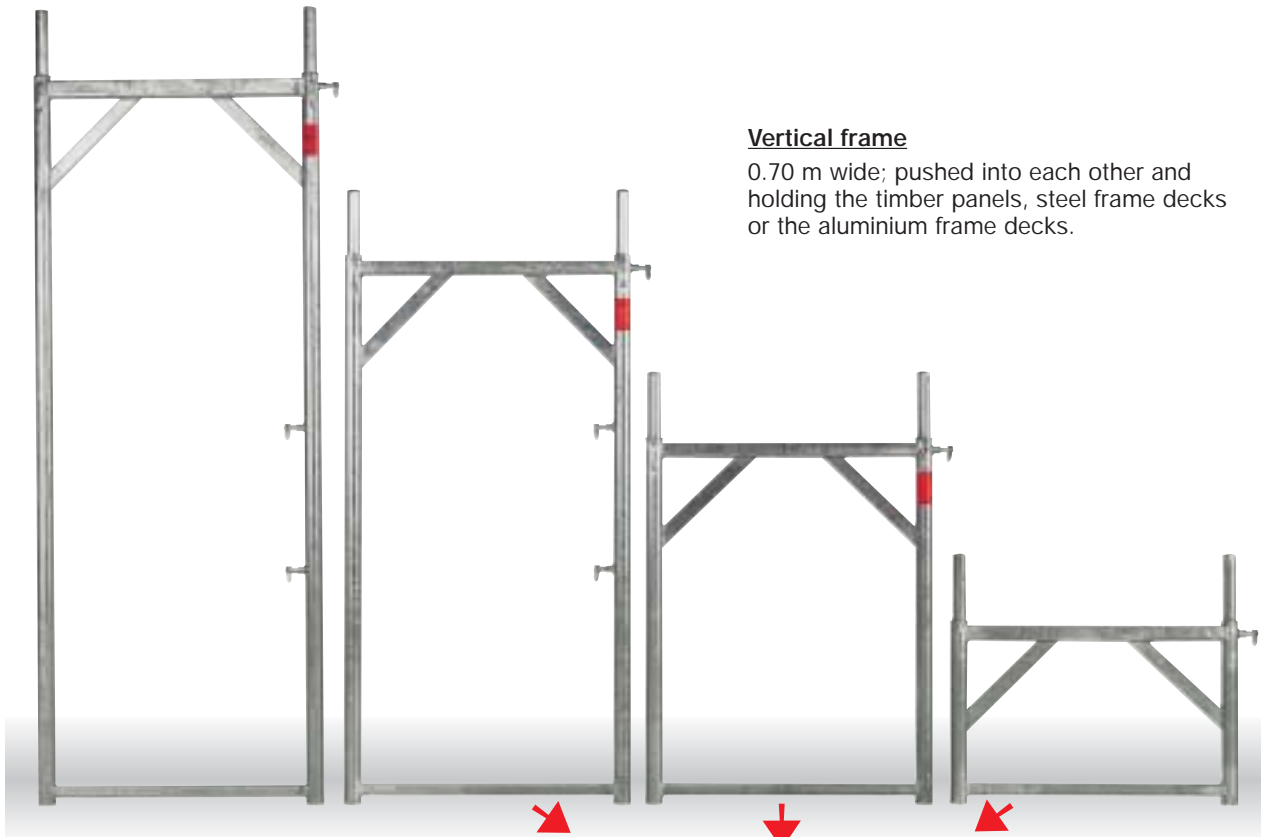
- ✗ for the erection of the müba FIX 70 scaffold system only a few basic elements are needed
- ✗ neither couplers nor special tools are necessary for setting up
- ✗ simple patch cords ensure a fast setting up
- ✗ all steel parts are galvanized and therefore protected against corrosion
- ✗ all timber parts are impregnated and thus protected against insect attack and rot
- ✗ easy stacking of the scaffold parts offers you advantages with transport and storage
- ✗ all scaffold parts are conceived in safety-relevant requirements



Frame scaffold FIX 70

Basic elements

few parts · fast setting up · vertical frame width 70 cm



Vertical frame

0.70 m wide; pushed into each other and holding the timber panels, steel frame decks or the aluminium frame decks.

USE ONLY FOR HEIGHT COMPENSATION

	Height: 2,00 m	Height: 1,50 m	Height: 1,00 m	Height: 0,50 m
Steel	Order no. 44000	Order no. 44001	Order no. 44002	Order no. 44003
Aluminium	Order no. 45000	Order no. 45001	Order no. 45002	Order no. 45003



Diagonal holder

putting on the outward screw jack; holds the diagonal and the guard rail.

Order no. 44026



Screw jack galvanized, 38 mm Ø
2 screw jacks holding 1 vertical frame;
enables the height compensation and the
adjustment of the scaffold framework.
(Using also with FIX 120).

Length: 350 mm Order no. 61010

Length: 490 mm Order no. 61011

Length: 800 mm Order no. 61035

Diagonal

for 2.50 m field length
for vertical frame

0,50 m..... Order no. 44013

1,00 m..... Order no. 44012

1,50 m..... Order no. 44011

2,00 m..... Order no. 44010

Diagonal

for 3.00 m field length
for vertical frame

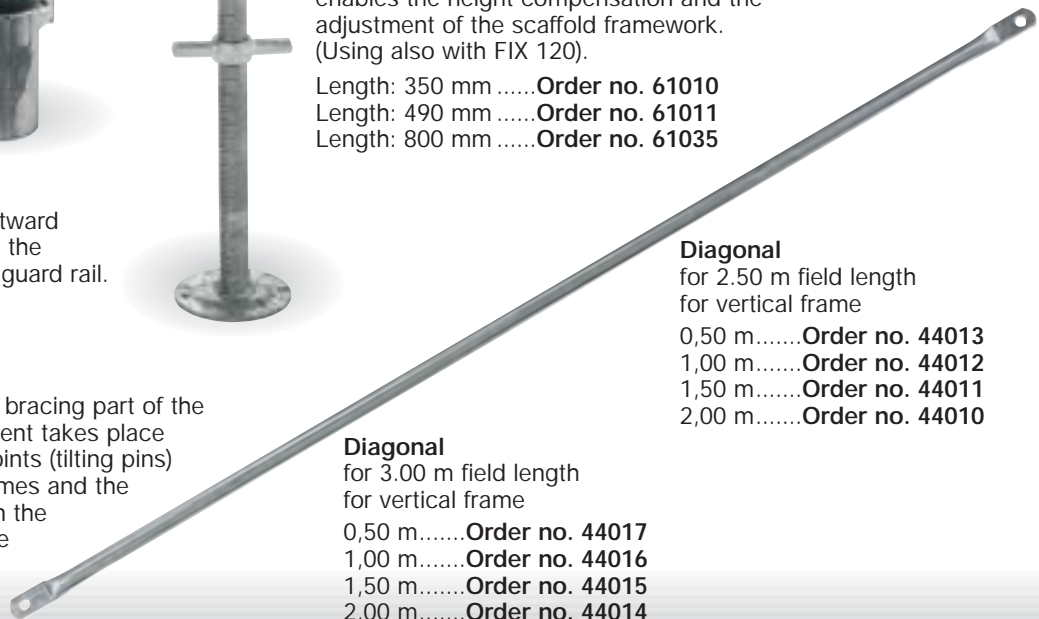
0,50 m..... Order no. 44017

1,00 m..... Order no. 44016

1,50 m..... Order no. 44015

2,00 m..... Order no. 44014

The diagonal is a bracing part of the scaffold; attachment takes place by attachment points (tilting pins) at the vertical frames and the diagonal holder in the lower range of the scaffold.



Basic elements

few parts · fast setting up · vertical frame width 70 cm



Safety guard rail (guard rail)

Length: 0,70 m.....Order no. 61135
 Length: 1,25 m.....Order no. 61136
 Length: 2,00 m.....Order no. 61137
 Length: 2,50 m.....Order no. 61016
 Length: 3,00 m.....Order no. 61017

Side protection

put into the attachment points (tilting pins) of the vertical frame and is handrail and antifall guard. (Using also with FIX 120).



Toe board

Length: 0,70 m.....Order no. 44074
 Length: 1,25 m.....Order no. 44059
 Length: 2,00 m.....Order no. 44071
 Length: 2,50 m.....Order no. 44023
 Length: 3,00 m.....Order no. 44024

Side protection

put between the pin-tubes of the vertical frame; Safety against falling parts and antifall guard. (Using also with FIX 120).

Decks and panels



Timber panel, one-piece, width 0,36 m

Length: 0,70 m.....Order no. 44041
 Length: 1,25 m.....Order no. 44048
 Length: 2,00 m.....Order no. 44049
 Length: 2,50 m.....Order no. 44040
 Length: 3,00 m.....Order no. 44051

2 pieces for each level; into the U-profile of the vertical frame are hung up and result in the working platform.



Aluminium frame deck with nonskid plywood, width 0,72 m

Length: 2,00 m.....Order no. 45012
 Length: 2,50 m.....Order no. 45004
 Length: 3,00 m.....Order no. 45005

1 piece for each level; into the U-profile of the vertical frame are hung-in and result in the working platform.



Steel frame deck, ripped, width 0,36 m

Length: 1,25 m.....Order no. 44038
 Length: 2,00 m.....Order no. 44068
 Length: 2,50 m.....Order no. 44067
 Length: 3,00 m.....Order no. 44069

2 pieces for each level; into the U-profile of the vertical frame are hung-in and result in the working platform. (Using also with FIX 120).

Frame scaffold FIX 70

Basic elements

few parts · fast setting up · vertical frame width 70 cm

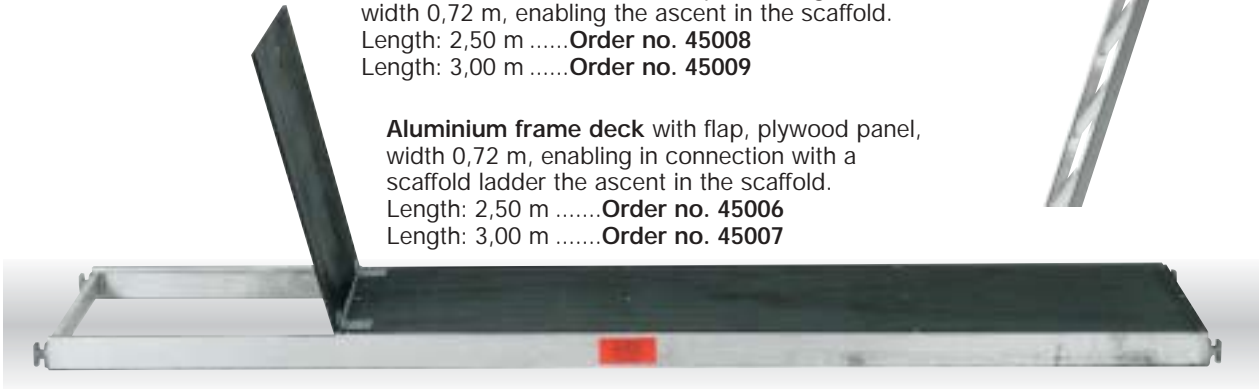
Building site suitable parts
- wherever are problems works



Aluminium frame deck with flap and integrated aluminium ladder, width 0,72 m, enabling the ascent in the scaffold.

Length: 2,50 m **Order no. 45008**

Length: 3,00 m **Order no. 45009**



Aluminium frame deck with flap, plywood panel, width 0,72 m, enabling in connection with a scaffold ladder the ascent in the scaffold.

Length: 2,50 m **Order no. 45006**

Length: 3,00 m **Order no. 45007**

End guard rail **Order no. 44020**

Installation in the vertical frame;
serves the front side of the scaffold.

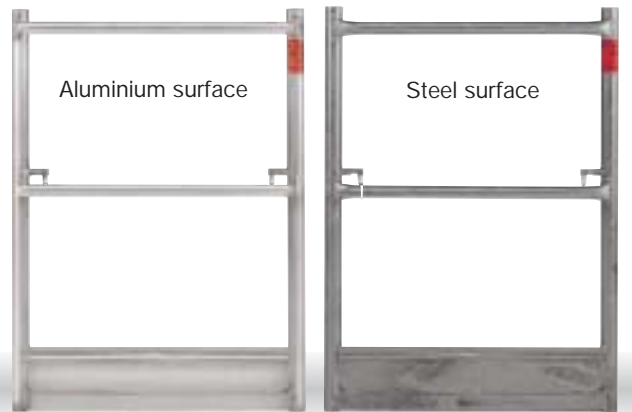


Handrail frame

on the highest level to the conclusion at the front side
one attaches on the vertical frame.

Steel **Order no. 44021**

Aluminium..... **Order no. 45021**



Wall bracing tube (Using also with FIX 120)

connects in prescribed distances
with couplers the vertical frames
to the building.

Length: 0,30 m **Order no. 61106**

Length: 0,60 m **Order no. 61013**

Length: 1,00 m **Order no. 61014**

Length: 1,50 m **Order no. 61015**

Length: 1,80 m **Order no. 61033**

Length: 2,50 m **Order no. 61108**

Length: 3,50 m **Order no. 61107**



Ladder

In-hung in the aluminium ladder frame

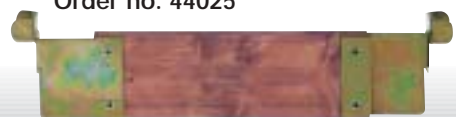
Height: 2,00 m **Order no. 44033**



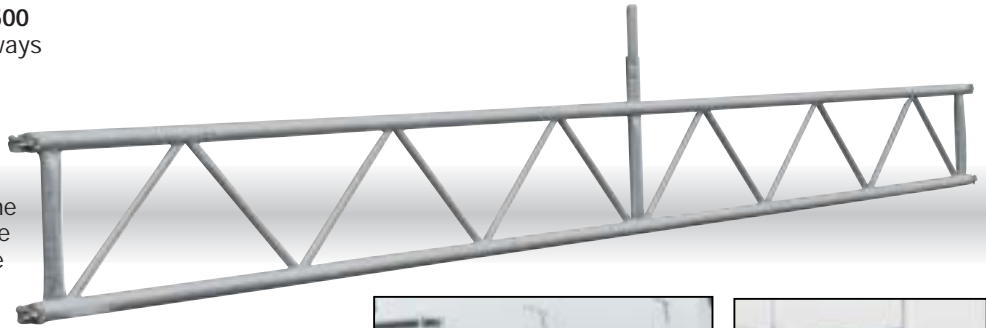
Front toe board

at the front side in the
vertical frame one attaches.

Order no. 44025



System lattice beam 500
for bridging wide doorways
or balconys
Length: 5,00 m
Order no. 61129



(For the admission of the horizontal decks must be placed one intermediate transom 1-part.)

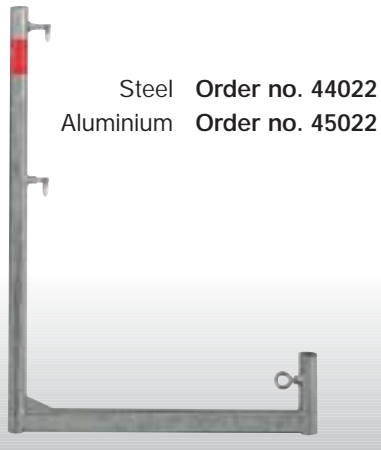


Intermediate bar 1-part
takes the horizontal frame decks or
the steel frame decks Order no. 44037



Handrail post 100

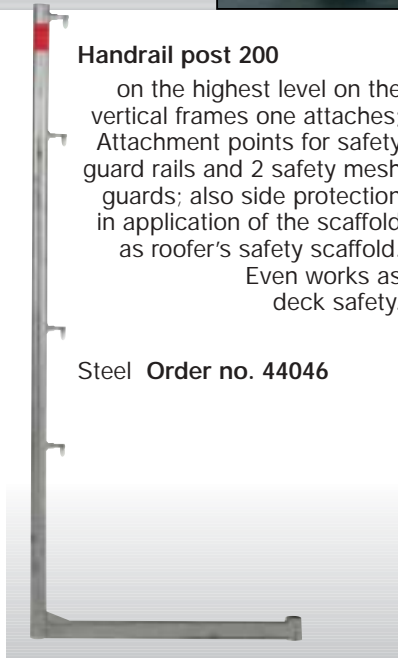
on the highest level on the vertical frames one attaches; Attachment points for safety guard rails and safety mesh guards also as deck safety.



Steel Order no. 44022
Aluminium Order no. 45022

Handrail post 200

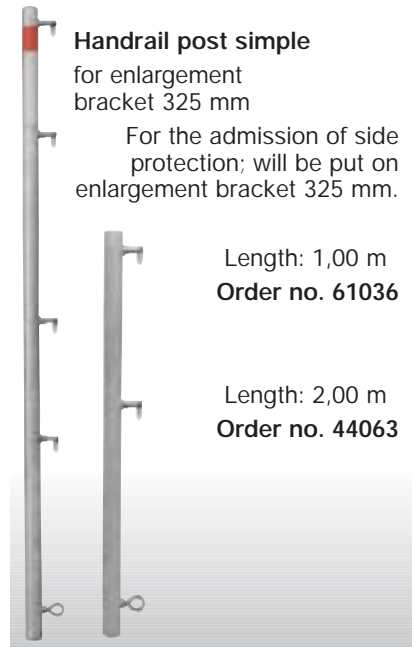
on the highest level on the vertical frames one attaches; Attachment points for safety guard rails and 2 safety mesh guards; also side protection in application of the scaffold as roofer's safety scaffold. Even works as deck safety.



Steel Order no. 44046

Handrail post simple
for enlargement
bracket 325 mm

For the admission of side protection; will be put on enlargement bracket 325 mm.



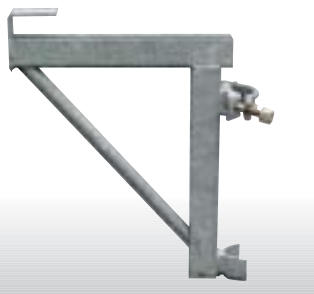
Length: 1,00 m
Order no. 61036

Length: 2,00 m
Order no. 44063

Enlargement bracket 325 mm

(Using also to FIX 120)
coupled to vertical frames;
resulting with appropriate decks
an inner enlargement of the scaffold
to 36 cm.

with screwed joint
Order no. 43023
or with wedge clamp
Order no. 43024



Enlargement bracket 325 mm

(Using also to FIX 120)
coupled to vertical frames;
resulting with appropriate decks an
outward enlargement of the scaffold
to 36 cm

with screwed joint
Order no. 44061



Enlargement bracket 500 mm

(Using also to FIX 120)
coupled to vertical frames; enables
the shortening or extension of the
scaffold fields to 50 cm

with screwed joint
Order no. 44085



Frame scaffold FIX 70

Side bracket frame
enables the recess of
overlying building parts.

Height: 2.00 m
Order no. 44005



Roofer's bracket
forms outside at the verti-
cal frame in combination
with decks the protective
roof.

Order no. 44045

Gap cover (Using also to FIX 120)
takes place between 2 vertical frames, covers the
gap between protective roof and decks (gap ≥ 8).

Length: 1,25 m Order no. 44044
Length: 2,00 m Order no. 44043
Length: 2,50 m Order no. 44042
Length: 3,00 m Order no. 44075



Deck protection

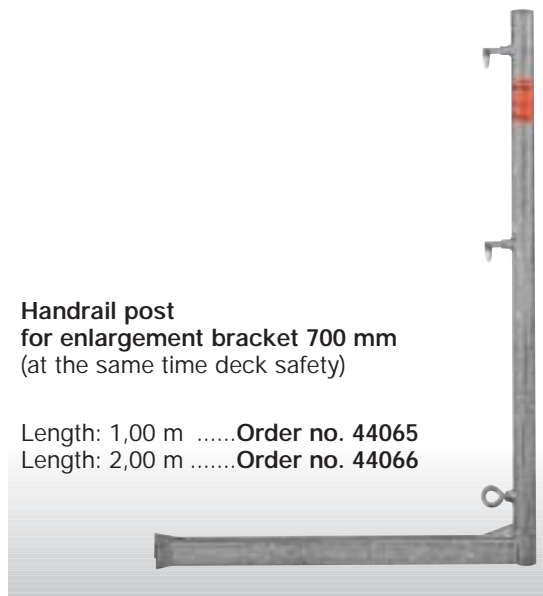
safes the deck in the highest level with employment
of enlargement brackets 700 and 738; will be put on
the vertical frame, even the deck is
not safed with a handrail post.

Order no. 44072



Handrail post
for enlargement bracket 700 mm
(at the same time deck safety)

Length: 1,00 m Order no. 44065
Length: 2,00 m Order no. 44066



Enlargement bracket 700 mm

coupled to vertical frames; result in an extension
of the scaffold from 79 cm with the appropriate
decks.



Order no. 44064

Enlargement bracket 738

coupled to vertical frames; result in an extension of
the scaffold from 87 cm with the appropriate
decks. It can be shifted with
vertical frames a
complete scaffold
width outward
or inside.



Order no. 44070

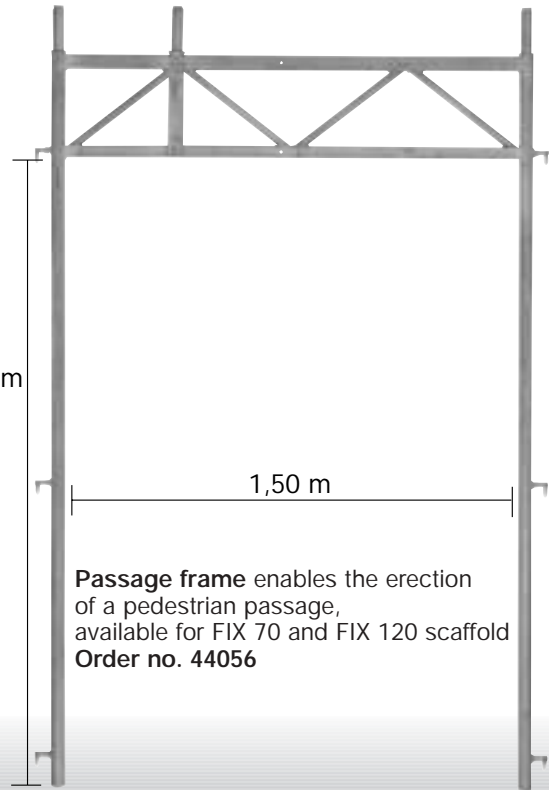


Vertical frame 0,35 m wide
(Reducing to one board width)
Art.-Nr. 44086

Top handrail frame
(with 2 m high protective wall,
put on the handrail frame)
Order no. 44036



2,00 m



1,50 m

Passage frame enables the erection
of a pedestrian passage,
available for FIX 70 and FIX 120 scaffold
Order no. 44056

Side safety net made of approx. 5 mm thick polypropylene,
mesh size 100 mm with stitched on edge wire, complete
with quick-opening belt fasteners permanently attached
to the net at intervals of approx. 70 cm.

ATTENTION: NETS MUST BE PROOFED ANNUALLY!

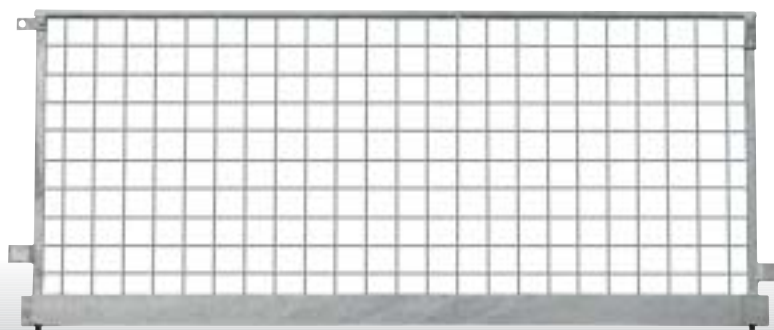
Height: 1,50 m Length: 10 m **Order no. 61073**
Height: 2,00 m Length: 5 m **Order no. 61074**
Height: 2,00 m Length: 10 m **Order no. 61072**



Safety mesh guard

hot dip galvanized, 1 m high

Length: 1,25 m **Order no. 61120** Length: 2,50 m **Order no. 61019**
Length: 2,00 m **Order no. 61121** Length: 3,00 m **Order no. 61090**



Frame scaffold FIX 70

Aluminium scaffold stairs

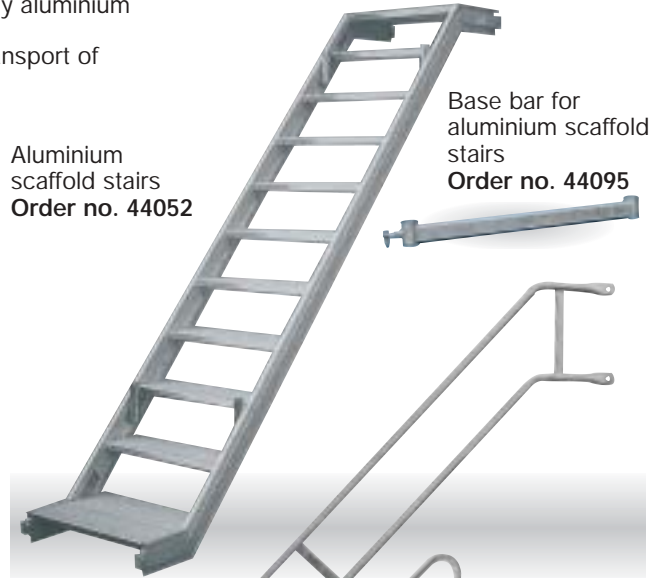
few parts · fast setting up · vertical frame width 70

With parts of the FIX 70 scaffold system and additionally aluminium scaffold stairs you may erect separate staircases. Particularly suited for frequent scaffold passage and transport of small material to the top scaffold level.



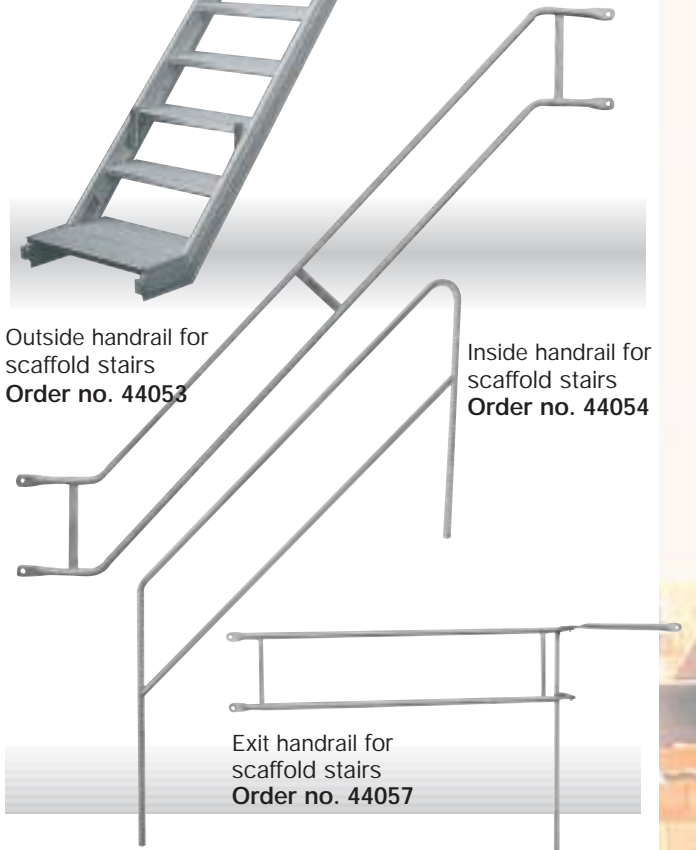
Aluminium scaffold stairs
Order no. 44052

Base bar for aluminium scaffold stairs
Order no. 44095



Outside handrail for scaffold stairs
Order no. 44053

Inside handrail for scaffold stairs
Order no. 44054

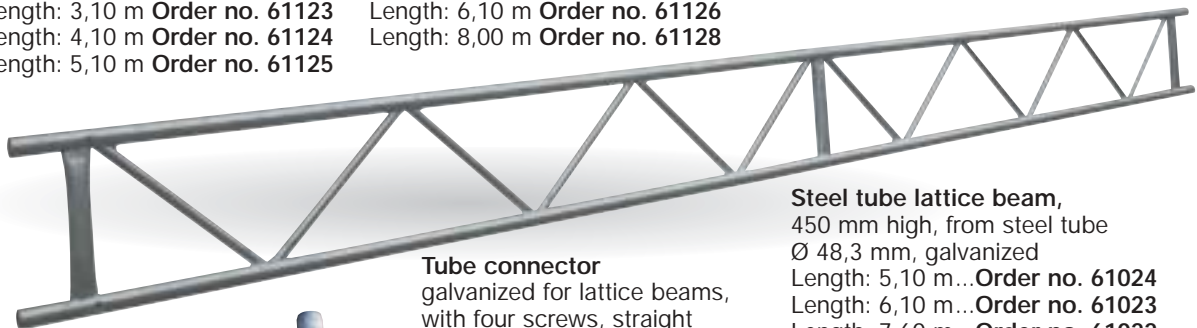


Exit handrail for scaffold stairs
Order no. 44057

Scaffold accessories system-free

Aluminium lattice beam, 450 mm high

Length: 3,10 m Order no. 61123 Length: 6,10 m Order no. 61126
Length: 4,10 m Order no. 61124 Length: 8,00 m Order no. 61128
Length: 5,10 m Order no. 61125



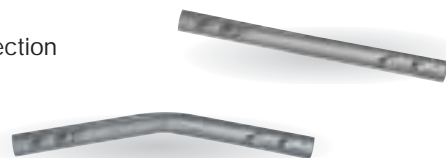
Steel tube lattice beam, 450 mm high, from steel tube
Ø 48,3 mm, galvanized
Length: 5,10 m...Order no. 61024
Length: 6,10 m...Order no. 61023
Length: 7,60 m...Order no. 61022

Tube connector galvanized for lattice beams, with four screws, straight for continuous connection
Order no. 61131

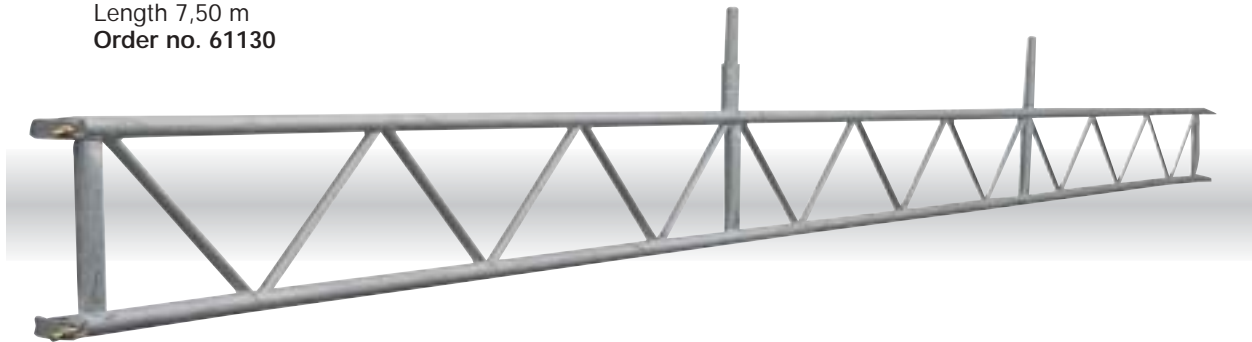
Tube connector, galvanized with half clamp, can be screwed on lattice beams or tubes
Order no. 61134



bent for continuous connection short version
Order no. 61132
long version
Order no. 61133

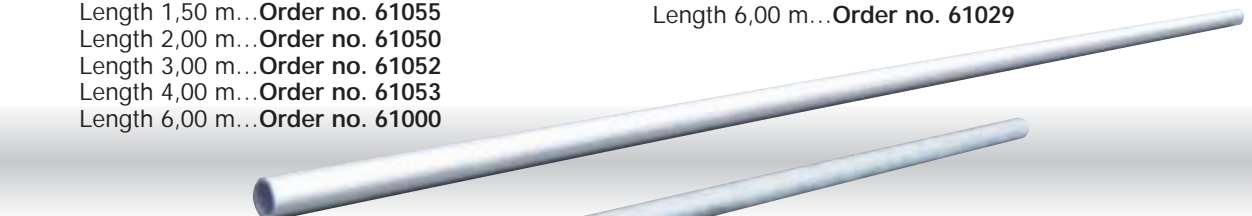


Bridging lattice beam
Length 7,50 m
Order no. 61130



Scaffold tube from steel
48,3 x 4,05 mm, galvanized nach DIN 2441
Length 1,50 m... Order no. 61055
Length 2,00 m... Order no. 61050
Length 3,00 m... Order no. 61052
Length 4,00 m... Order no. 61053
Length 6,00 m... Order no. 61000

Scaffold tube from aluminium
48,3 x 4,05 mm, EN AW-6082/T6
Length 6,00 m... Order no. 61029



Tube connector
galvanized,
Order no. 61007



Rotary clamp
with test symbol, galvanized
with flanged nut, WAF 22

Order no. 61003



Standard clamp
with test symbol, galvanized
with flanged nut, WAF 22

Order no. 61002



Tension coupling
with test symbol, galvanized
with flanged nut, WAF 22

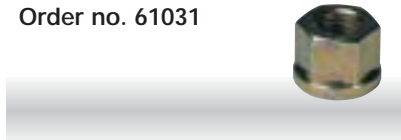
Order no. 61004



Screwed joint with tilting pin,
galvanized, WAF 22
Order no. 61047



Flanged nut (M 14)
WAF 22
Order no. 61031



Hammer head bolt
galvanized, M14 x 63
Order no. 61030



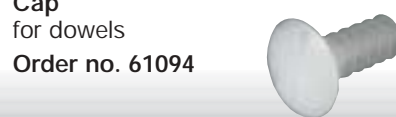
Dowel
plastic, for eye bolts
170 mm Order no. 61063
135 mm Order no. 61077
185 mm Order no. 61093



Eye bolt 12 mm
120 mm... Order no. 61062
190 mm... Order no. 61076
350 mm... Order no. 61092



Cap
for dowels
Order no. 61094



Frame scaffold FIX 70

Scaffold accessories system-free

Castor with screw jack and brake, 38 mm Ø.
Load bearing capacity: 5.0 kN
Adjustment range: 330 mm
Order no. 61048



Ratchet wrench
reversible, with aluminium handle and chrome vanadium head
for WAF 19
Order no. 61020
for WAF 22
Order no. 61021
for WAF 19+22
Order no. 61105



Recess bracket
(to adjust large terrain roughness)
Order no. 61028



Castor with brake,
Load bearing capacity: 3.0 kN
Order no. 61012



Screw jack, swivel-mounted, galvanized, 38 mm Ø,
Total length: 520 mm, adjustment range: 285 mm
Load carrying capacity 25 kN (additional bracing of the equipment required at the base lengthways)
Order no. 61100



Scaffold sign holder
Order no. 61018



Forms for scaffold sign holder
Order no. 61109



Lift bracket
swivel-mounted, throat 1.10 m
Load bearing capacity 200 kg
Order no. 61060

Rope
for lift bracket
16 mm Ø,
25 m long
Order no. 25060



Reel
for lift bracket
Load bearing capacity 200 kg
Order no. 61061

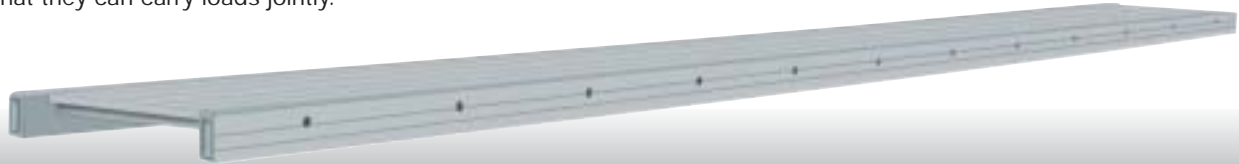


Adapter
(with this adapter its possible to erect the Fix 70 scaffold on top of the Fix 120 scaffold)
Order no. 44073

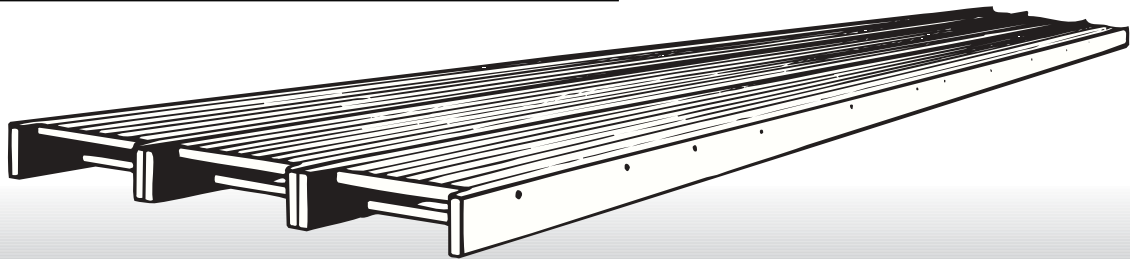
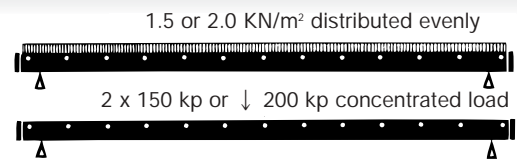
Aluminium catwalks

Comply with DIN 4420 for all maintenance work specified in capacity load group II. Ensure it is placed on a stable support capable of bearing a load!

If several catwalks are placed next to each other, they are connected with rods so that they can carry loads jointly.



Length (m)	Width (m)	Height (m)	Order no.	Scaffold class
04,20	0,60	0,09	61080	3
05,20	0,60	0,09	61081	2
06,20	0,60	0,11	61082	2
08,20	0,60	0,15	61083	2



Rail bracket for aluminium catwalks

for attachment of rail posts.

This enables easy assembly of the side protection, 3-part

for 1 aluminium catwalk (0.60 m)

Order no. 61085

for 2 aluminium catwalks (1.20 m)

Order no. 61086



Counterpart

for attachment of a second rail post

Order no. 61091



Handrail post for rail bracket

Height: 1,00 m

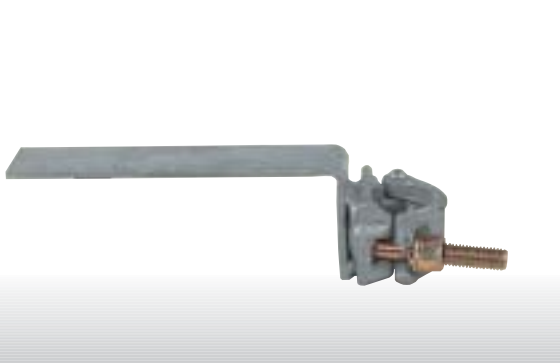
Order no. 61036



Tilting guard for aluminium catwalks

galvanized, clamp with flanged nut WAF 22, keeps catwalks from tilting sideways

Order no. 61087



Frame scaffold FIX 70

Scaffold safety nets and tarpaulins

✓ trouble-free attachment ✓ universally applicable ✓ tearproof ✓ the ideal scaffold protection



Scaffold safety tarpaulin

The professional scaffold safety tarpaulin with the proven perforation system Ratio - Plan (DBGM), pre-punched and perforated.

Sizes:

Total width: 2,70 m
Raster width: 2,50 m

Length:
10,0 m (27 m²) **Order no. 61066**
20,0 m (54 m²) **Order no. 61067**

Total width: 3,25 m
Raster width: 3,00 m

Length:
10,0 m (32,5 m²) **Order no. 61110**
20,0 m (65,0 m²) **Order no. 61111**

The punched holes can be opened quickly and easily without aids.

Reinforced PE sheeting, reinforced edges on 4 sides, UV-stabilized

Tear strength: approx. 700 N/ 5 cm
Weight: approx. 220 g/m²



Scaffold safety net

The versatile scaffold safety net is extremely tear-resistant and very lightweight. The net enables optimum air circulation and is dust-tight at the same time.

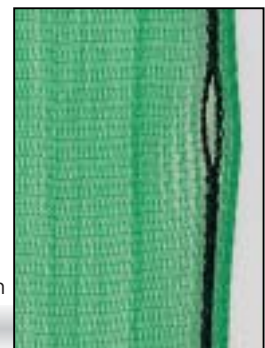
Sizes:

Total width: 2,50 m
Length:
10,0 m (25 m²) **Order no. 61064**
20,0 m (50 m²) **Order no. 61075**

Total width: 3,00 m
Length:
10,0 m (30 m²) **Order no. 61112**
20,0 m (60 m²) **Order no. 61113**

Material: Polyethylene
Threads: approx. 0,3 mm
Tear strength: approx. 210 N/ 5 cm
Mesh size: approx. 1,8 x 1,8 mm
Weight: approx. 50 g/m²

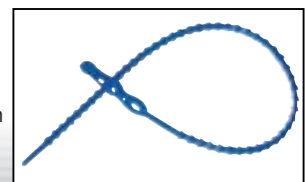
Easy, fast fastening with eyes at intervals of 50 cm.



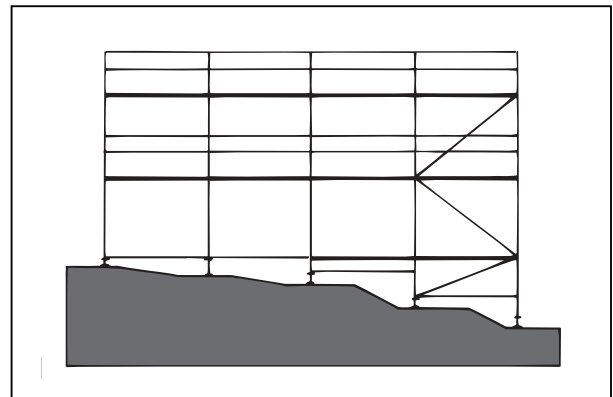
Tie (for scaffold safety net)
Connects the net quickly to **all** scaffold types.

32 cm long, 100 pieces/carton

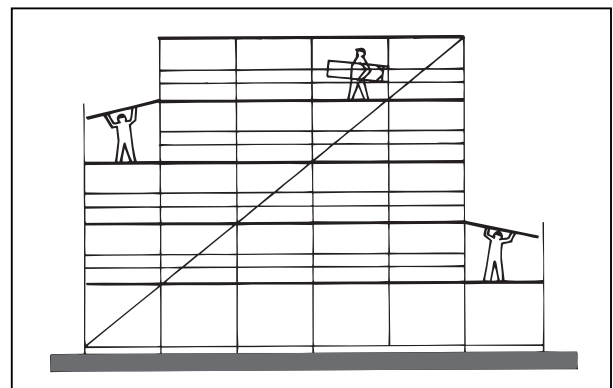
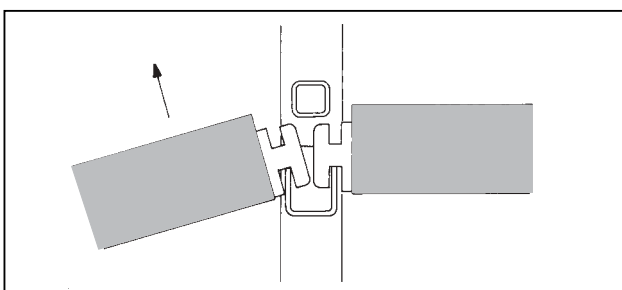
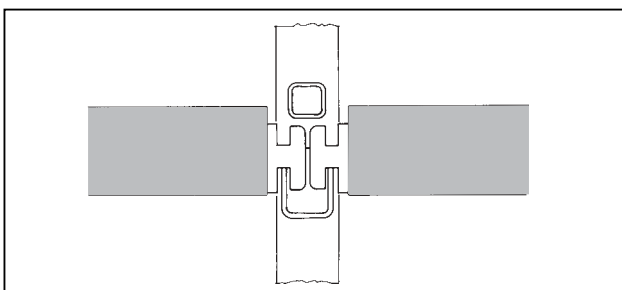
Order no. 61068



Sample applications



By means of different foot spindles and vertical frames kinds of smaller and larger terrain roughness or diagonal area places can be adjusted problem-free. If taken the first level right, the further scaffold structure works in a good way.



The müba FIX 70 scaffold is in such a way designed, that the scaffold field could be developed and diminished level by level from one side to the other side. An important solution if scaffold material is not storage-like present.

System pallets

Scaffold pallet

Different scaffold systems (fettler's or mason's scaffold etc.) can be stored safely and economically thanks to the infinite adjustability of the scaffold pallets. Captive wedge closing devices secure your scaffold during transport and storage.

You need only one pallet size.

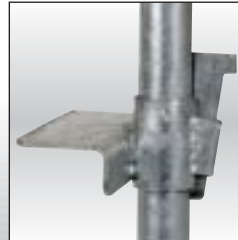
Order no. 15160



Scaffold pallet

Internal height: 1,20 m
Internal Width: 0,70 - 1,30 m
Internal Length: 1,30 m

Stepless vertical adjustment by wedge catch
Stepless horizontal adjustment by wedge catch



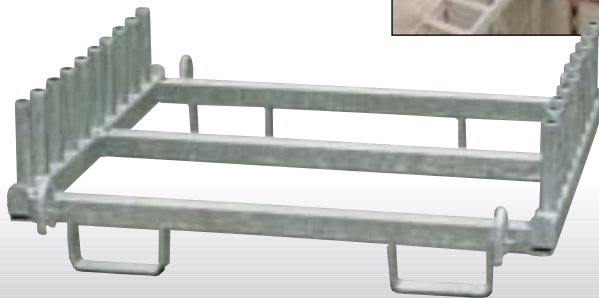
Vertical frame pallet

Excellently suited for stacking vertical frames.

20 vertical frames can be inserted in a stacking pallet. This ensures optimum use of storage space. Safe transport on lorries is also guaranteed because the vertical frames will not slip and the steel strips will not tear. This provides for ergonomic working conditions for the scaffolder because the frames can be taken out of the pallet vertically.

Vertical frame pallet for Fix 70
Order no. 15200

Vertical frame pallet for Fix 120
Order no. 15190



Technical subject to change 04/ 08

Your special dealer: